

iCTmotor

W I R E L E S S

iCTmotor

iCTmotor(WL-1)

iCTmotor



- Precision control (20~2,000rpm/ Torque : 5~70Ncm)
- Wireless System (Main Unit, Foot Controller)
- High compatibility

Dentium

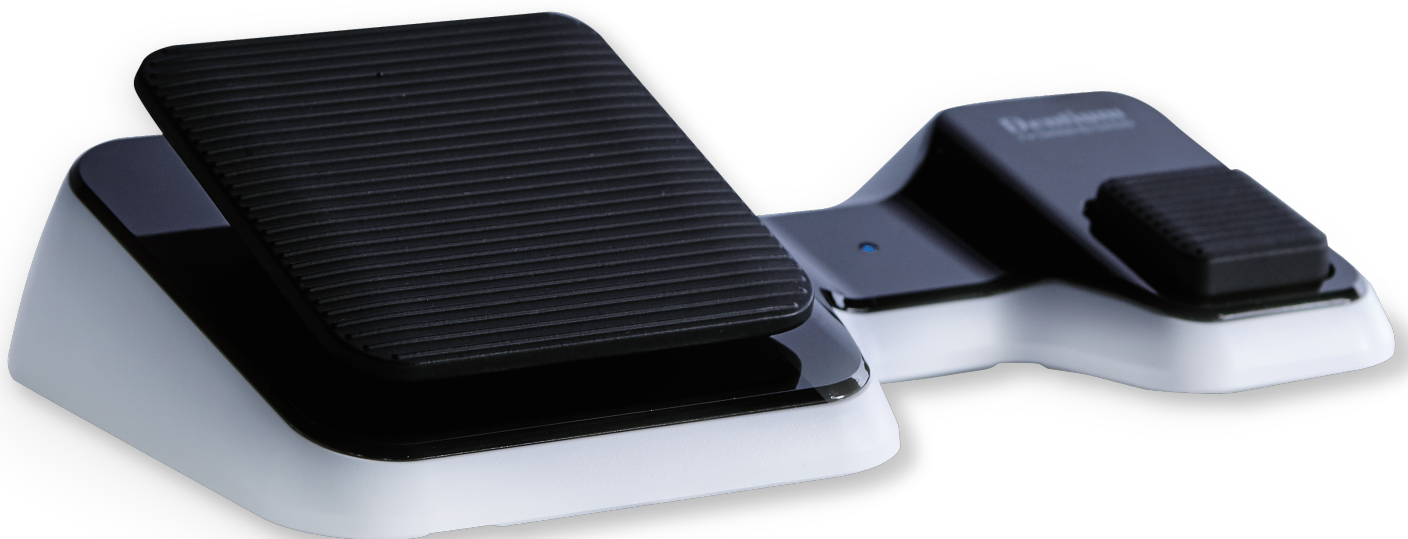
1F, 5F, 9F, 10F, 76, Changnyong-daero 256beon-gil, Yeongtong-gu,
Suwon-si, Gyeonggi-do, 16229, Republic of Korea
Tel. +82-70-7098-4027, 6909 Fax. +82-31-281-5561 www.dentium.com

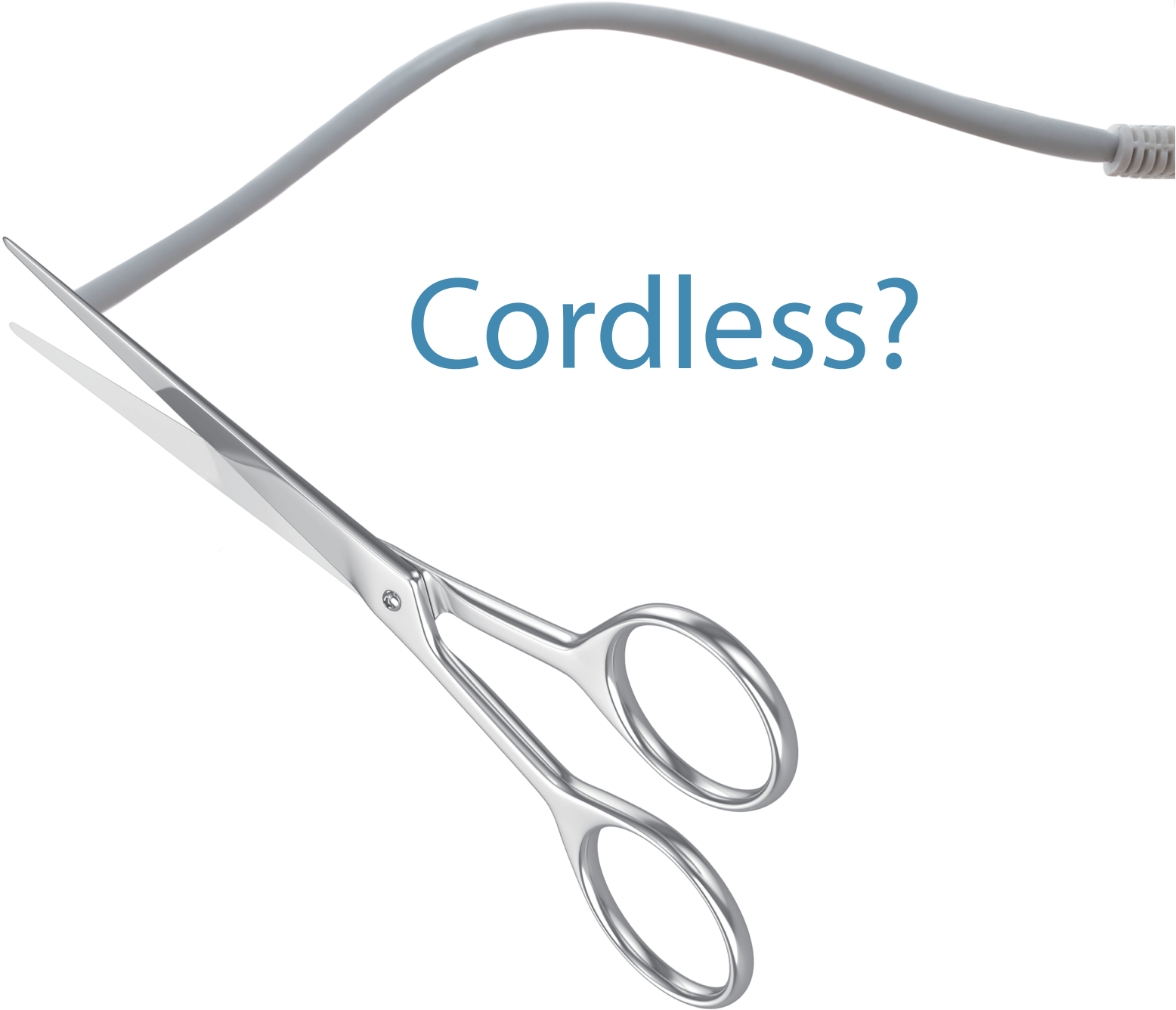
Dentium

www.dentium.com



The Freedom of a **Cordless System**





Cordless?

Convenience you've never Experienced Before
Cordless Main Unit System and Foot Switch Controller System

Cordless Main Unit System

- The world's First and most Convenient Cordless Main Unit System
- Easily Operated with Three Pedal Switches and has an Intuitive User Interface
- Easy mobility and Installation since It's Cord-Free





High Level of Precision



Optic Micro-Motor



Cord-Free

Cordless Foot Switch System

- It's easy to use without a mess of Cables
- The Safety double-push Pedal helps to Improve Reliability and Stability
- Intuitive Operation Switch has enhanced Ease of Use (i.e. Intuitive Operability, Step Change, Reverse Rotation)



HANDPIECE

Codent Handpiece

- Powerful torque of 80 Ncm
- Convenient maintenance by internal spray

Bien Air Handpiece

- Swiss luxury brand for over 60 years
- Comfortable grip by external spray

Handpiece	Codent
Fiber Optic	<input checked="" type="checkbox"/>
Reduction Ratio	20:1
Maximum Torque	80 Ncm
Maximum Speed	40,000 rpm
Spray	Single (external/internal)

Handpiece	Bien Air
Fiber Optic	<input checked="" type="checkbox"/>
Reduction Ratio	20:1
Maximum Torque	70 Ncm
Maximum Speed	40,000 rpm
Spray	Internal irrigation



TECHNICAL SPECIFICATION



Category	Specification
Product Dimension	Main Unit: 27.8(W) X 17.5(D) X 13.4(H) Cm Micro Motor: Ø 22 X 120(L) Cm Foot Controller: 21.7(W) X 12(D) X 5.55(H) Cm
Product Weight	Main Unit: 3 kg Foot Controller: 0.7 kg Micro Motor: 0.4 kg
Rotation Speed Range Torque Range	Rotational Speed Range: 20 ~ 2,000 rpm Rotational Torque Range: 5 ~ 70 N·cm (※ Based on 20:1 of gear ratio)
Irrigation	Level 1 : 40 mL/min Level 2 : 50 mL/min Level 3 : 60 mL/min
Cordless Specification	IEEE 802.15(Zigbee) Frequency range : 2405-2480MHz Number of channel : 16 Channel spacing : 5MHz RF output power : 8.6dBm EIRP